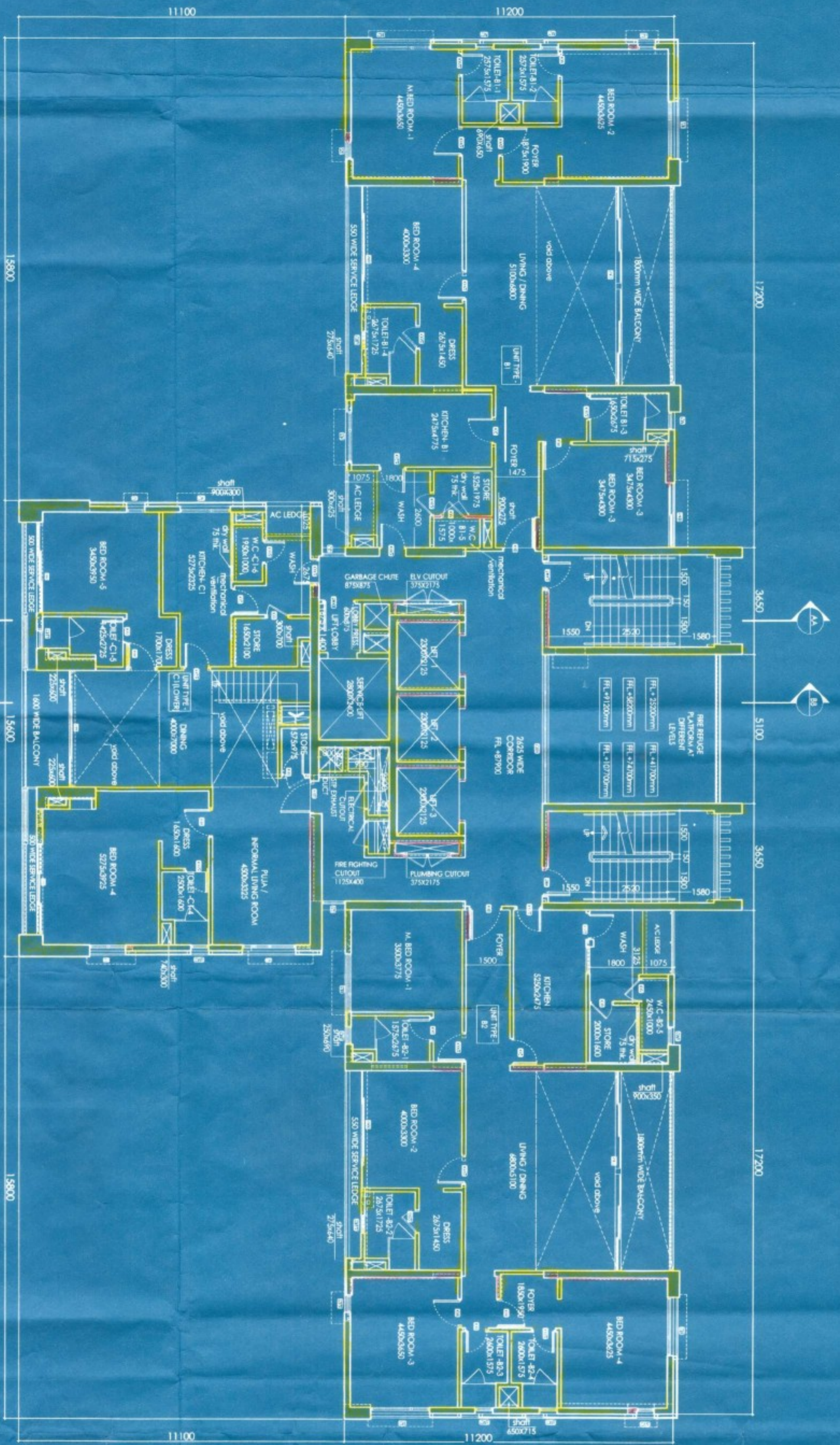
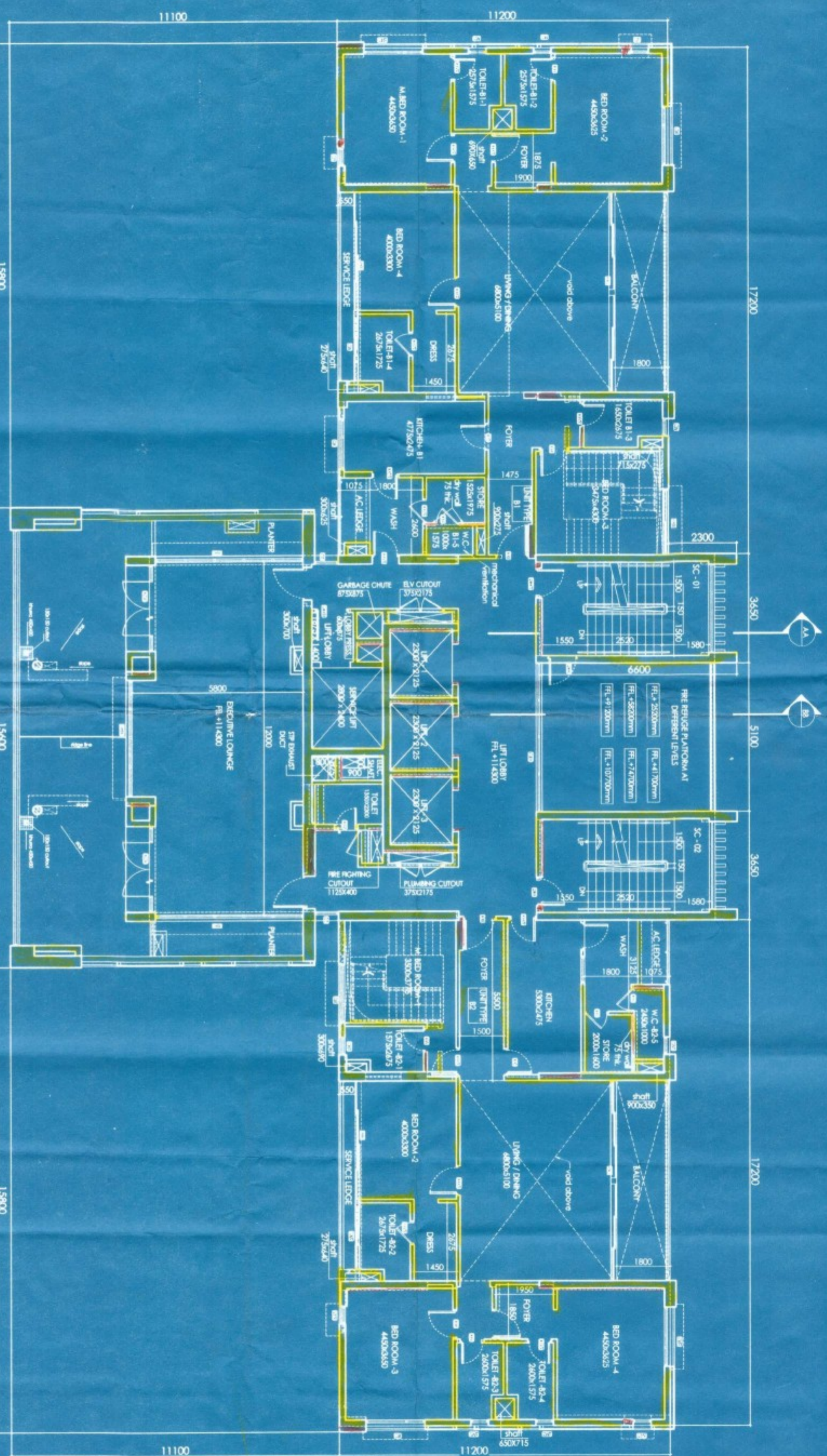


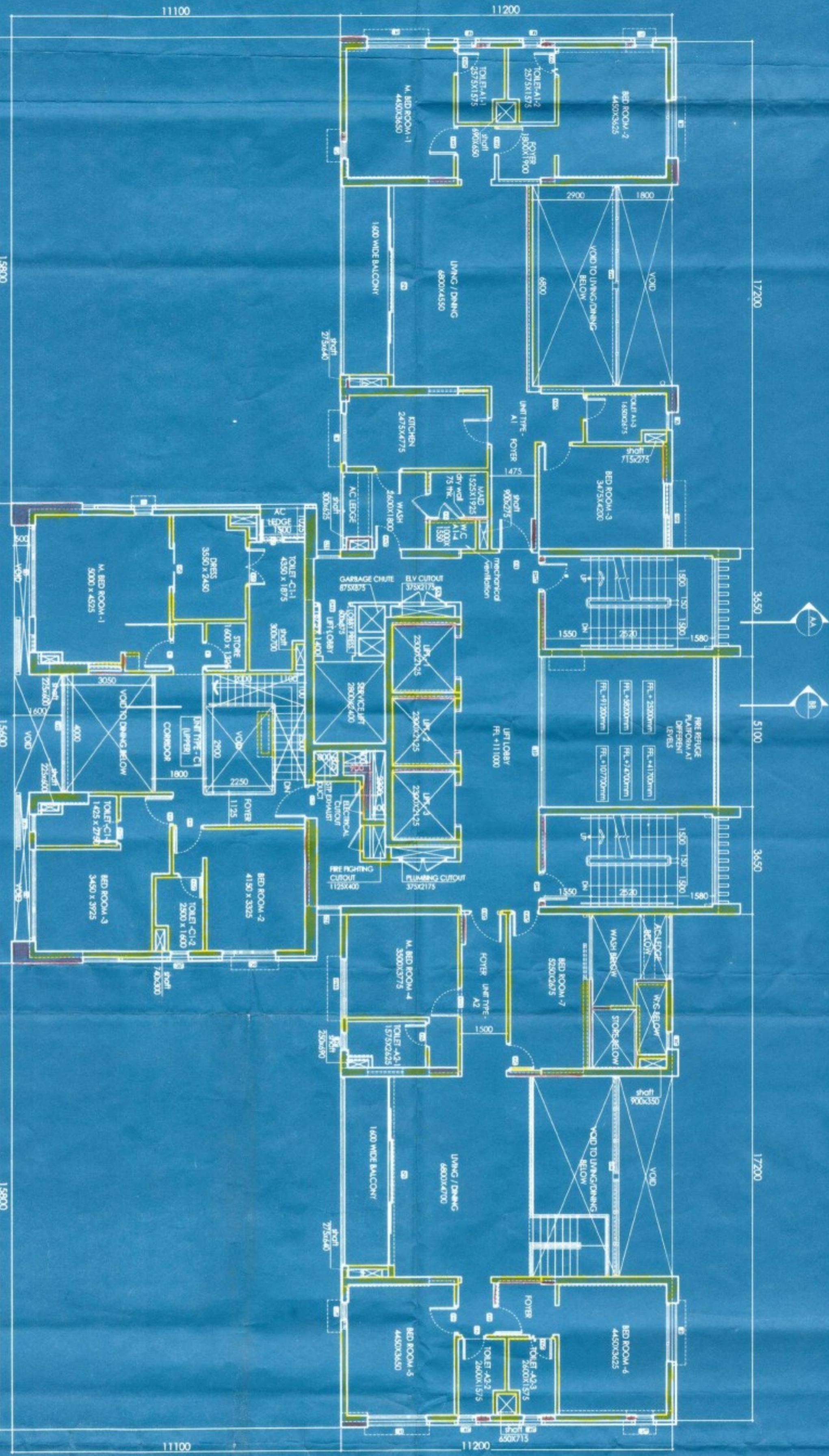
17TH FLOOR PLAN



20TH FLOOR PLAN



34TH FLOOR PLAN



38RD FLOOR PLAN

**GENERAL NOTES**

- 1. ALL DIMENSIONS ARE IN MM.
- 2. ALL THE MATERIALS TO BE USED SHALL BE AS PER THE SPECIFICATIONS MENTIONED.
- 3. THE WORKMANSHIP SHALL BE AS PER THE SPECIFICATIONS MENTIONED.
- 4. THE WORKMANSHIP SHALL BE AS PER THE SPECIFICATIONS MENTIONED.
- 5. THE WORKMANSHIP SHALL BE AS PER THE SPECIFICATIONS MENTIONED.

**CERTIFICATE OF GEO-TECHNICAL ENGINEER**

INFORMATION AND REPORT TO BE SUBMITTED TO THE GEO-TECHNICAL ENGINEER FOR THE DESIGN OF THE FOUNDATION SHALL BE AS PER THE SPECIFICATIONS MENTIONED.

**SIGNATURE OF OWNER**

THE OWNER HAS REVIEWED THE DRAWINGS AND APPROVES THE SAME FOR CONSTRUCTION.

**CERTIFICATE OF ARCHITECT**

THE ARCHITECT HAS REVIEWED THE DRAWINGS AND APPROVES THE SAME FOR CONSTRUCTION.

**TOWER- 2**

- 17TH FLOOR PLAN
- 20TH FLOOR PLAN
- 34TH FLOOR PLAN
- 38RD FLOOR PLAN

Drawn by	Checked by	Approved by
PK	AK	
Design Development	Construction Draw	



**PARTY'S COPY**

KOLKATA MUNICIPAL CORPORATION  
BUILDING DEPT.  
PLANS APPROVED IN R. 23 (A & C) of  
K.M.C. BUILDING REGULATIONS, 1973  
By Drawing No. 22/17-1 and  
Scale 1/8" on 1/4" sheet.  
Checked on 21/11/09 by Asst. Engineer (A)  
S. S. Das  
Inspector  
of 1/4" scale. (A) (1)  
Assisted Engineer D. S. Das  
By No. 507

This Plan is to be treated as Part  
And Part of the Certificate No. 22/17-1  
B. S. Plan No. 22/17-1  
Checked on 21/11/09 by Asst. Engineer (A)  
S. S. Das  
Inspector  
of 1/4" scale. (A) (1)  
Assisted Engineer D. S. Das  
By No. 507

OFFICE OF THE DEPUTY COMMISSIONER  
MUNICIPAL CORPORATION  
THE TOWN OF KOLKATA CORPORATION

*(Faint, illegible text)*